

Restylane[®]

Before & after

PICTURES

Emily

Emily – Front



Treated with 0.7mL of **Restylane Lyft** and 0.5mL of **Restylane Defyne** in the chin • 0.5ml of **Restylane Defyne** in the nasolabial folds • 1mL of **Restylane Kysse** in the lips

Veeva Code : ASSET-RES-3584

Emily - Profile (left)



Treated with 0.7mL of **Restylane Lyft** and 0.5mL of **Restylane Defyne** in the chin • 0.5ml of **Restylane Defyne** in the nasolabial folds • 1mL of **Restylane Kysse** in the lips

Veeva Code : ASSET-RES-3583

Emily - 3/4 (left)



Treated with 0.7mL of **Restylane Lyft** and 0.5mL of **Restylane Defyne** in the chin • 0.5ml of **Restylane Defyne** in the nasolabial folds • 1mL of **Restylane Kysse** in the lips

Veeva Code : ASSET-RES-3580

Emily - 3/4 (left)



Treated with 0.7mL of **Restylane Lyft** and 0.5mL of **Restylane Defyne** in the chin • 0.5ml of **Restylane Defyne** in the nasolabial folds • 1mL of **Restylane Kysse** in the lips

Veeva Code : ASSET-RES-3579

Emily - Front



Treated with 0.7mL of **Restylane Lyft** and 0.5mL of **Restylane Defyne** in the chin • 0.5ml of **Restylane Defyne** in the nasolabial folds • 1mL of **Restylane Kysse** in the lips

Veeva Code : ASSET-RES-3581

Emily - 3/4 (right)



Treated with 0.7mL of **Restylane Lyft** and 0.5mL of **Restylane Defyne** in the chin • 0.5ml of **Restylane Defyne** in the nasolabial folds • 1mL of **Restylane Kysse** in the lips

Veeva Code : ASSET-RES-3578

Emily - 3/4 (right)



Treated with 0.7mL of **Restylane Lyft** and 0.5mL of **Restylane Defyne** in the chin • 0.5ml of **Restylane Defyne** in the nasolabial folds • 1mL of **Restylane Kysse** in the lips

Veeva Code : ASSET-RES-3585

Emily - Profile (right)

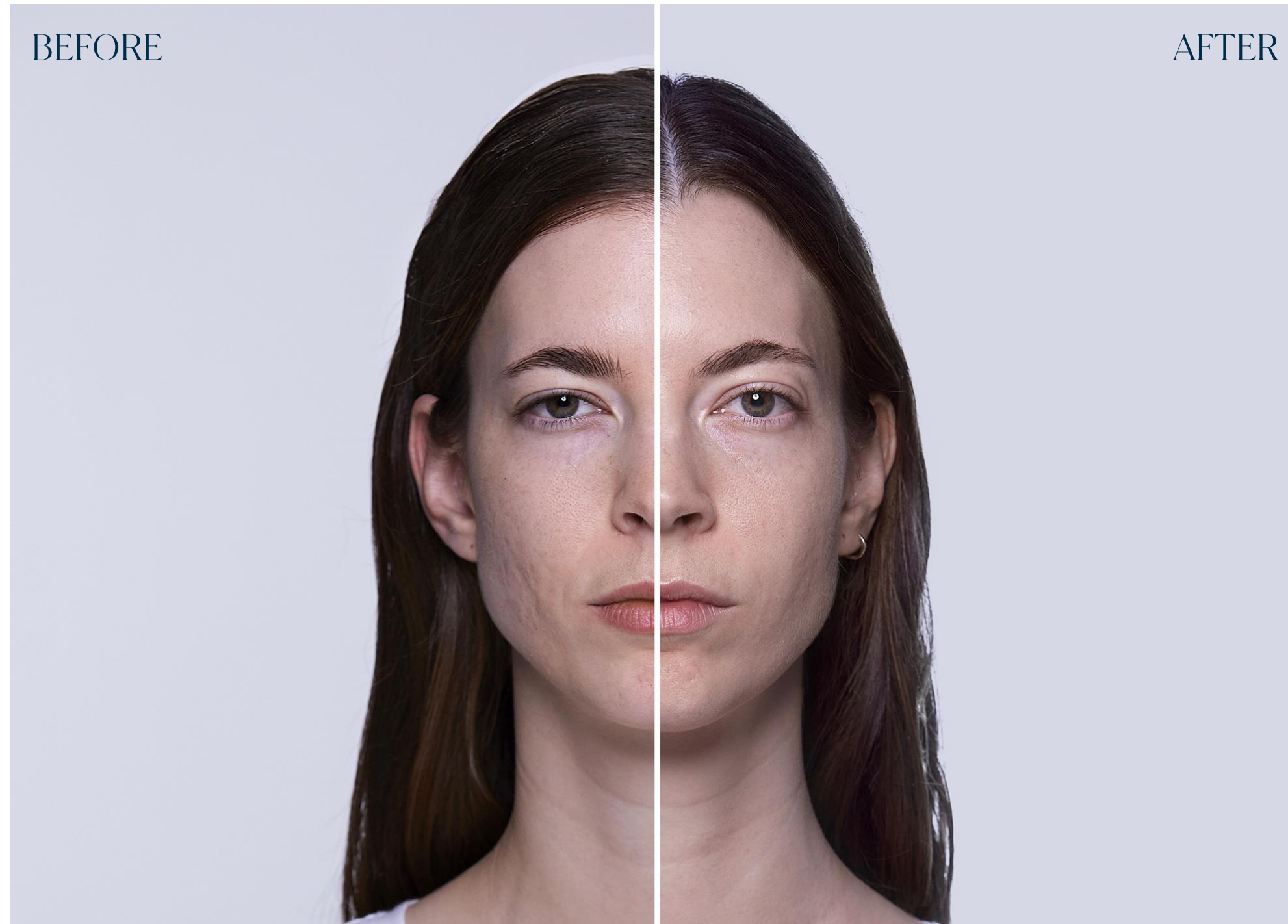


Treated with 0.7mL of **Restylane Lyft** and 0.5mL of **Restylane Defyne** in the chin • 0.5ml of **Restylane Defyne** in the nasolabial folds • 1mL of **Restylane Kysse** in the lips

Veeva Code : ASSET-RES-3582

Carmela

Carmela – Front



Treated with 2mL of **Restylane Skinboosters** in the cheeks • 0.2mL of **Restylane Refyne** in the nasolabial folds

Veeva Code : ASSET-RES-3573

Carmela - Profile (left)



Treated with 2mL of **Restylane Skinboosters** in the cheeks • 0.2mL of **Restylane Refyne** in the nasolabial folds

Carmela - 3/4 (left)



Treated with 2mL of **Restylane Skinboosters** in the cheeks • 0.2mL of **Restylane Refyne** in the nasolabial folds

Carmela - 3/4 (left)



Treated with 2mL of **Restylane Skinboosters** in the cheeks • 0.2mL of **Restylane Refyne** in the nasolabial folds

Carmela – Front



Treated with 2mL of **Restylane Skinboosters** in the cheeks • 0.2mL of **Restylane Refyne** in the nasolabial folds

Veeva Code : ASSET-RES-3573

Carmela - 3/4 (right)



Treated with 2mL of **Restylane Skinboosters** in the cheeks • 0.2mL of **Restylane Refyne** in the nasolabial folds

Veeva Code : ASSET-RES-3571

Carmela - 3/4 (right)



Treated with 2mL of **Restylane Skinboosters** in the cheeks • 0.2mL of **Restylane Refyne** in the nasolabial folds

Carmela – Profile (right)



Treated with 2mL of **Restylane Skinboosters** in the cheeks • 0.2mL of **Restylane Refyne** in the nasolabial folds

Kay
Tian

Kay Tian – Front



Treated with 2mL of **Restylane Refyne** in the marionette lines & nasolabial folds • 1.8mL of **Restylane Lyft Lidocaine** in the chin • 1.2mL of **Restylane Defyne** in the chin • 2mL of **Restylane Skinboosters Vital Lidocaine** in the cheeks • 1mL of **Restylane Kysse** in the lips • 0.6mL of **Restylane Lyft** in the nose

Veeva Code : ASSET-RES-3593

Kay Tian - Profile (left)



Treated with 2mL of **Restylane Refyne** in the marionette lines & nasolabial folds • 1.8mL of **Restylane Lyft Lidocaine** in the chin • 1.2mL of **Restylane Defyne** in the chin • 2mL of **Restylane Skinboosters Vital Lidocaine** in the cheeks • 1mL of **Restylane Kysse** in the lips • 0.6mL of **Restylane Lyft** in the nose

Kay Tian - 3/4 (left)



Treated with 2mL of **Restylane Refyne** in the marionette lines & nasolabial folds • 1.8mL of **Restylane Lyft Lidocaine** in the chin • 1.2mL of **Restylane Defyne** in the chin • 2mL of **Restylane Skinboosters Vital Lidocaine** in the cheeks • 1mL of **Restylane Kysse** in the lips • 0.6mL of **Restylane Lyft** in the nose

Veeva Code : ASSET-RES-3589

Kay Tian - 3/4 (left)



Treated with 2mL of **Restylane Refyne** in the marionette lines & nasolabial folds • 1.8mL of **Restylane Lyft Lidocaine** in the chin • 1.2mL of **Restylane Defyne** in the chin • 2mL of **Restylane Skinboosters Vital Lidocaine** in the cheeks • 1mL of **Restylane Kysse** in the lips • 0.6mL of **Restylane Lyft** in the nose

Veeva Code : ASSET-RES-3588

Kay Tian – Front



Treated with 2mL of **Restylane Refyne** in the marionette lines & nasolabial folds • 1.8mL of **Restylane Lyft Lidocaine** in the chin • 1.2mL of **Restylane Defyne** in the chin • 2mL of **Restylane Skinboosters Vital Lidocaine** in the cheeks • 1mL of **Restylane Kysse** in the lips • 0.6mL of **Restylane Lyft** in the nose

Veeva Code : ASSET-RES-3590

Kay Tian - 3/4 (right)



Treated with 2mL of **Restylane Refyne** in the marionette lines & nasolabial folds • 1.8mL of **Restylane Lyft Lidocaine** in the chin • 1.2mL of **Restylane Defyne** in the chin • 2mL of **Restylane Skinboosters Vital Lidocaine** in the cheeks • 1mL of **Restylane Kysse** in the lips • 0.6mL of **Restylane Lyft** in the nose

Veeva Code : ASSET-RES-3586

Kay Tian - 3/4 (right)



Treated with 2mL of **Restylane Refyne** in the marionette lines & nasolabial folds • 1.8mL of **Restylane Lyft Lidocaine** in the chin • 1.2mL of **Restylane Defyne** in the chin • 2mL of **Restylane Skinboosters Vital Lidocaine** in the cheeks • 1mL of **Restylane Kysse** in the lips • 0.6mL of **Restylane Lyft** in the nose

Veeva Code : ASSET-RES-3587

Kay Tian - Profile (right)



Treated with 2mL of **Restylane Refyne** in the marionette lines & nasolabial folds • 1.8mL of **Restylane Lyft Lidocaine** in the chin • 1.2mL of **Restylane Defyne** in the chin • 2mL of **Restylane Skinboosters Vital Lidocaine** in the cheeks • 1mL of **Restylane Kysse** in the lips • 0.6mL of **Restylane Lyft** in the nose

Veeva Code : ASSET-RES-3591

Lewis

Lewis – Front



Treated with 0.3mL of **Restylane Lyft** in the nose • 0.6mL of **Restylane Lyft** in the cheeks • 2.4mL of **Restylane Lyft** in the jawline • 0.5mL of **Restylane Volyme** in the cheeks • 2mL of **Restylane Refyne** in the nasolabial folds and pre auricular area • 4mL of **Restylane Defyne** in the jawline • 0.6mL of **Restylane Lyft** in the pyriform fossa

Lewis - Profile (left)



Treated with 0.3mL of **Restylane Lyft** in the nose • 0.6mL of **Restylane Lyft** in the cheeks • 2.4mL of **Restylane Lyft** in the jawline • 0.5mL of **Restylane Volyme** in the cheeks • 2mL of **Restylane Refyne** in the nasolabial folds and pre auricular area • 4mL of **Restylane Defyne** in the jawline • 0.6mL of **Restylane Lyft** in the pyriform fossa

Lewis - 3/4 (left)



Treated with 0.3mL of **Restylane Lyft** in the nose • 0.6mL of **Restylane Lyft** in the cheeks • 2.4mL of **Restylane Lyft** in the jawline • 0.5mL of **Restylane Volyme** in the cheeks • 2mL of **Restylane Refyne** in the nasolabial folds and pre auricular area • 4mL of **Restylane Defyne** in the jawline • 0.6mL of **Restylane Lyft** in the pyriform fossa

Lewis - 3/4 (left)



Treated with 0.3mL of **Restylane Lyft** in the nose • 0.6mL of **Restylane Lyft** in the cheeks • 2.4mL of **Restylane Lyft** in the jawline • 0.5mL of **Restylane Volyme** in the cheeks • 2mL of **Restylane Refyne** in the nasolabial folds and pre auricular area • 4mL of **Restylane Defyne** in the jawline • 0.6mL of **Restylane Lyft** in the pyriform fossa

Lewis – Front



Treated with 0.3mL of **Restylane Lyft** in the nose • 0.6mL of **Restylane Lyft** in the cheeks • 2.4mL of **Restylane Lyft** in the jawline • 0.5mL of **Restylane Volyme** in the cheeks • 2mL of **Restylane Refyne** in the nasolabial folds and pre auricular area • 4mL of **Restylane Defyne** in the jawline • 0.6mL of **Restylane Lyft** in the pyriform fossa

Lewis – 3/4 (right)



Treated with 0.3mL of **Restylane Lyft** in the nose • 0.6mL of **Restylane Lyft** in the cheeks • 2.4mL of **Restylane Lyft** in the jawline • 0.5mL of **Restylane Volyme** in the cheeks • 2mL of **Restylane Refyne** in the nasolabial folds and pre auricular area • 4mL of **Restylane Defyne** in the jawline • 0.6mL of **Restylane Lyft** in the pyriform fossa

Lewis – 3/4 (right)



Treated with 0.3mL of **Restylane Lyft** in the nose • 0.6mL of **Restylane Lyft** in the cheeks • 2.4mL of **Restylane Lyft** in the jawline • 0.5mL of **Restylane Volyme** in the cheeks • 2mL of **Restylane Refyne** in the nasolabial folds and pre auricular area • 4mL of **Restylane Defyne** in the jawline • 0.6mL of **Restylane Lyft** in the pyriform fossa

Lewis – Profile (right)



Treated with 0.3mL of **Restylane Lyft** in the nose • 0.6mL of **Restylane Lyft** in the cheeks • 2.4mL of **Restylane Lyft** in the jawline • 0.5mL of **Restylane Volyme** in the cheeks • 2mL of **Restylane Refyne** in the nasolabial folds and pre auricular area • 4mL of **Restylane Defyne** in the jawline • 0.6mL of **Restylane Lyft** in the pyriform fossa

Kerri

Kerri – Front



Treated with 2mL of **Restylane Lyft** in the cheeks • 1mL **Restylane Lyft** in the chin • 0.5 ml of **Restylane Eye light** in the eyes • 1mL **Restylane Refyne** in the nasolabial folds • 0.4mL of **Restylane Refyne** in the subcutaneous pre auricular area • 0.7mL of **Restylane Kysse** in the lips • 0.2mL of **Restylane Defyne** in the subcutaneous chin

Kerri – Profile (left)



Treated with 2mL of **Restylane Lyft** in the cheeks • 1mL **Restylane Lyft** in the chin • 0.5 ml of **Restylane Eye light** in the eyes • 1mL **Restylane Refyne** in the nasolabial folds • 0.4mL of **Restylane Refyne** in the subcutaneous pre auricular area • 0.7mL of **Restylane Kysse** in the lips • 0.2mL of **Restylane Defyne** in the subcutaneous chin

Kerri - 3/4 (left)



Treated with 2mL of **Restylane Lyft** in the cheeks • 1mL **Restylane Lyft** in the chin • 0.5 ml of **Restylane Eye light** in the eyes • 1mL **Restylane Refyne** in the nasolabial folds • 0.4mL of **Restylane Refyne** in the subcutaneous pre auricular area • 0.7mL of **Restylane Kysse** in the lips • 0.2mL of **Restylane Defyne** in the subcutaneous chin

Kerri - 3/4 (left)



Treated with 2mL of **Restylane Lyft** in the cheeks • 1mL **Restylane Lyft** in the chin • 0.5 ml of **Restylane Eye light** in the eyes • 1mL **Restylane Refyne** in the nasolabial folds • 0.4mL of **Restylane Refyne** in the subcutaneous pre auricular area • 0.7mL of **Restylane Kysse** in the lips • 0.2mL of **Restylane Defyne** in the subcutaneous chin

Kerri – Front



Treated with 2mL of **Restylane Lyft** in the cheeks • 1mL **Restylane Lyft** in the chin • 0.5 ml of **Restylane Eye light** in the eyes • 1mL **Restylane Refyne** in the nasolabial folds • 0.4mL of **Restylane Refyne** in the subcutaneous pre auricular area • 0.7mL of **Restylane Kysse** in the lips • 0.2mL of **Restylane Defyne** in the subcutaneous chin

Kerri – 3/4 (right)



Treated with 2mL of **Restylane Lyft** in the cheeks • 1mL **Restylane Lyft** in the chin • 0.5 ml of **Restylane Eye light** in the eyes • 1mL **Restylane Refyne** in the nasolabial folds • 0.4mL of **Restylane Refyne** in the subcutaneous pre auricular area • 0.7mL of **Restylane Kysse** in the lips • 0.2mL of **Restylane Defyne** in the subcutaneous chin

Kerri – 3/4 (right)



Treated with 2mL of **Restylane Lyft** in the cheeks • 1mL **Restylane Lyft** in the chin • 0.5 ml of **Restylane Eye light** in the eyes • 1mL **Restylane Refyne** in the nasolabial folds • 0.4mL of **Restylane Refyne** in the subcutaneous pre auricular area • 0.7mL of **Restylane Kysse** in the lips • 0.2mL of **Restylane Defyne** in the subcutaneous chin

Kerri – Profile (right)



Treated with 2mL of **Restylane Lyft** in the cheeks • 1mL **Restylane Lyft** in the chin • 0.5 ml of **Restylane Eye light** in the eyes • 1mL **Restylane Refyne** in the nasolabial folds • 0.4mL of **Restylane Refyne** in the subcutaneous pre auricular area • 0.7mL of **Restylane Kysse** in the lips • 0.2mL of **Restylane Defyne** in the subcutaneous chin