

EXPORT ONLY

CLATUU α

FREEZE ON FAT OFF

clatuu.com

 **CLASSSYS**
Technology for better life

Fast and Easy Applicator Exchange

With a simple press-and-release mechanism, the CLATUU Alpha allows maximum convenience and makes switching cooling cups as simple as possible. Detaching cables or turning the system off is not required even during treatments.



ARC-T

Thighs & Other Flat and Wide Areas

WING Max

Upper & Lower Abdomen

WING

Upper & Lower Abdomen
Flanks & Other Large Areas

WING Plus

Bra Line, Back & Love Handles

FLAT Mini

Double Chin, Axilla, Knees & Other Local Regions

WING Mini

Double Chin, Axilla, Knees & Other Local Regions

FLAT

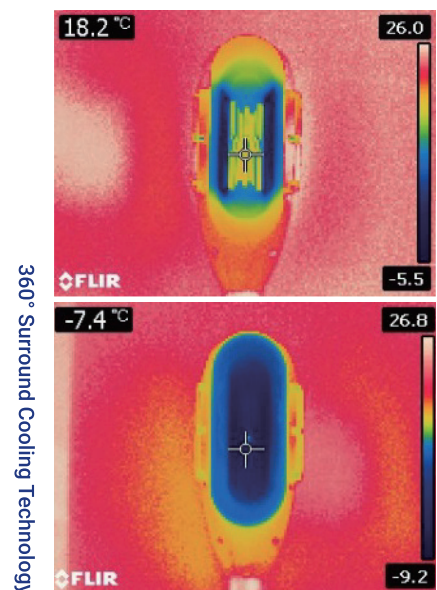
Abomen & Inner Thighs

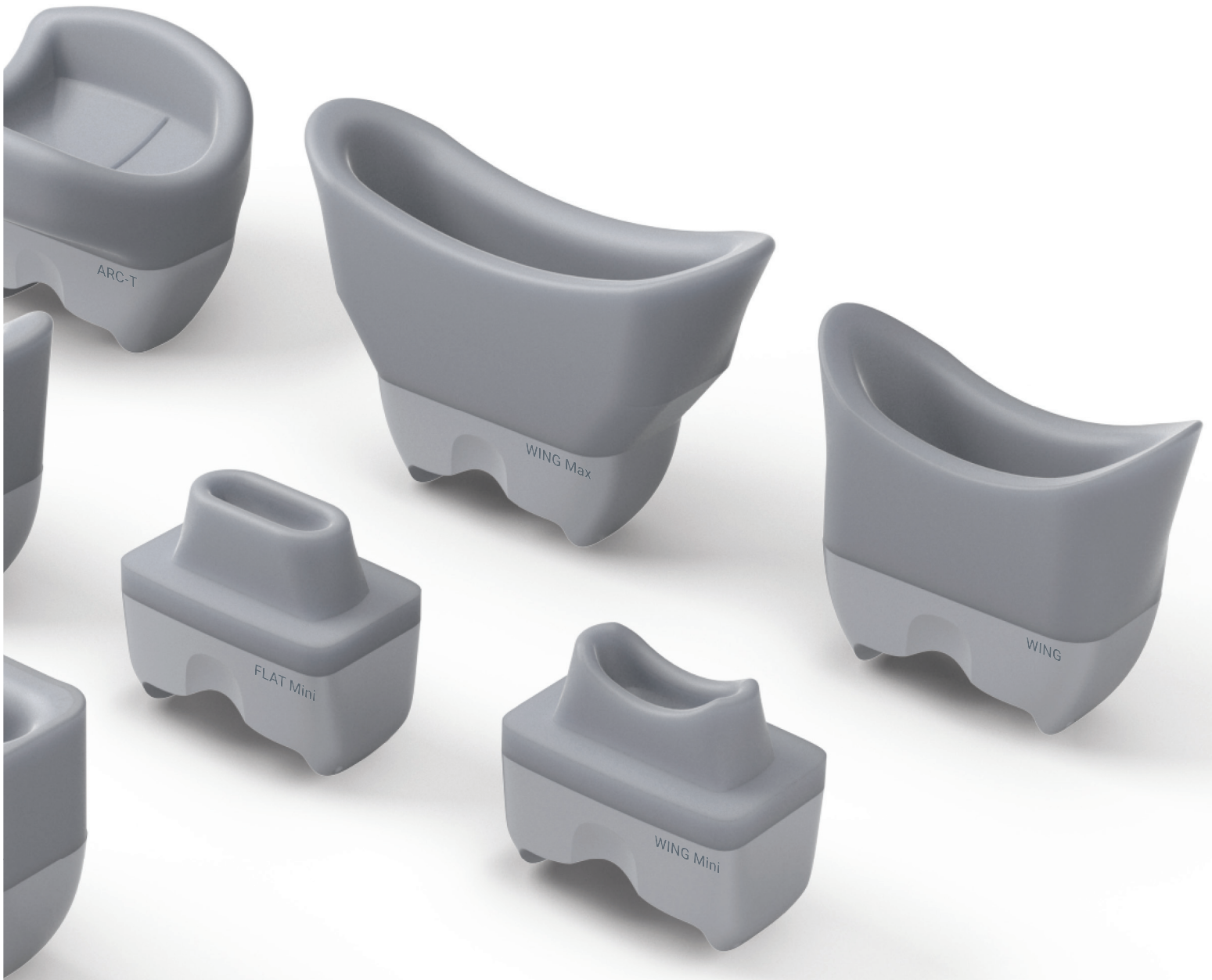
Treat 2 Areas Simultaneously in Only 40 Minutes.

The CLATUU Alpha is equipped with an expandable range of applicators that makes it easier than ever to achieve significant results on the most challenging of areas.

Upgraded Technology for Enhanced Results.

The upgraded 360° surround cooling of the CLATUU Alpha delivers cooling energy throughout the entire applicator and makes it possible to reach the designated treatment temperature at a faster rate, thus increasing efficiency by up to 18%.





Adjustable Levels

Not only is the CLATUU Alpha capable of 20% stronger suction, it also provides medical practitioners with the ability to adjust both cooling and suction levels to confidently provide customized treatments for patients.



Non-invasive tumescent cryolipolysis using a new 4D handpiece: a comparative study with a porcine model

By: S. Wang, T. B. Kwon, J. Kim, H. K. Lee, S. H. Lee, S. H. Lee

Background: The purpose of this study was to compare the efficacy of a new 4D handpiece (CLATUU Alpha) with a conventional handpiece (CLATUU Beta) in non-invasive tumescent cryolipolysis using a porcine model. The study was designed as a randomized, controlled, comparative study. The study was conducted in a porcine model. The study was conducted in a porcine model. The study was conducted in a porcine model.

Methods: The study was conducted in a porcine model. The study was conducted in a porcine model. The study was conducted in a porcine model. The study was conducted in a porcine model. The study was conducted in a porcine model.

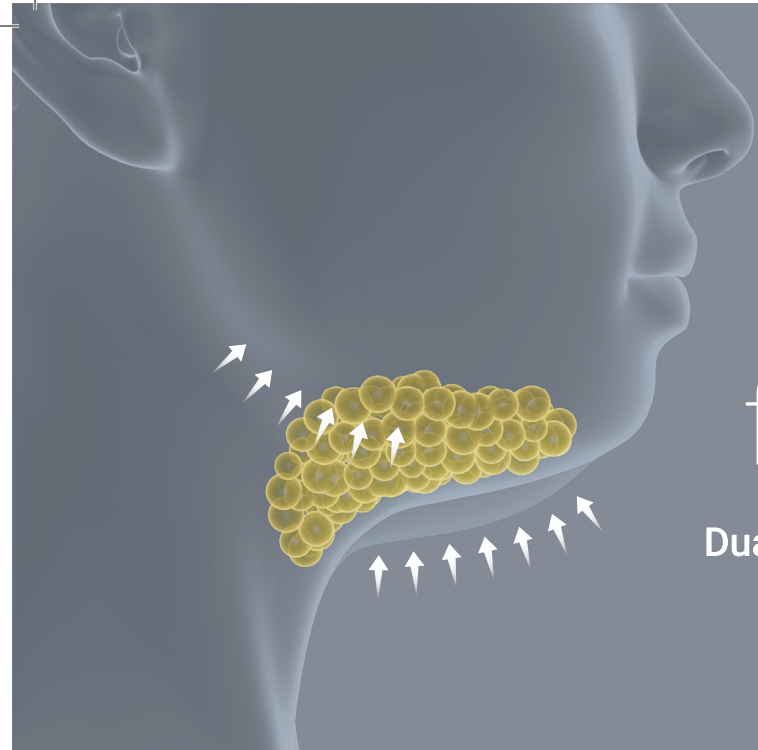
Results: The study was conducted in a porcine model. The study was conducted in a porcine model. The study was conducted in a porcine model. The study was conducted in a porcine model. The study was conducted in a porcine model.

Conclusion: The study was conducted in a porcine model. The study was conducted in a porcine model. The study was conducted in a porcine model. The study was conducted in a porcine model. The study was conducted in a porcine model.

Keywords: CLATUU Alpha, CLATUU Beta, non-invasive tumescent cryolipolysis, porcine model.

Our clinical results confirmed that non-invasive fat cooling results in adipocyte cell death and apoptosis over time.

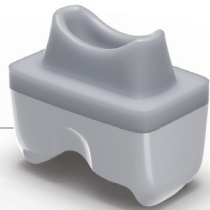
It has the world's first 360° cooling panel that can deliver cooling energy more effectively than the conventional two-sided model.



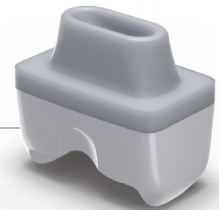
Mini for Double Chin

Dual Applicators for Specialized Treatments

WING Mini



FLAT Mini



Baseline

Post 7 Weeks / 1 Session



Baseline

Post 5 Weeks / 1 Session



Baseline

Post 4 Weeks / 1 Session



Baseline

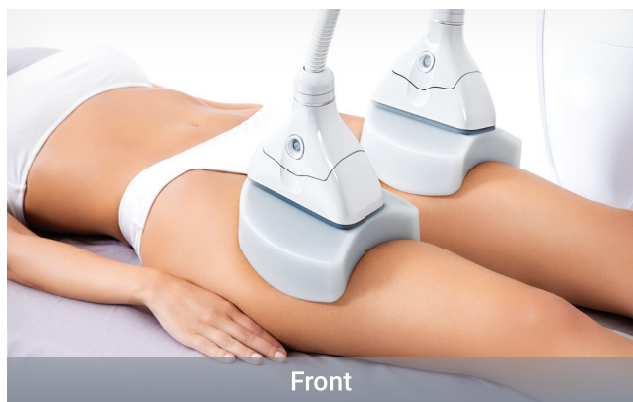
Post 4 Weeks / 1 Session



ARC-T for Thighs

Multi-Angle Attachment for
Slim & Contoured Legs & Hips

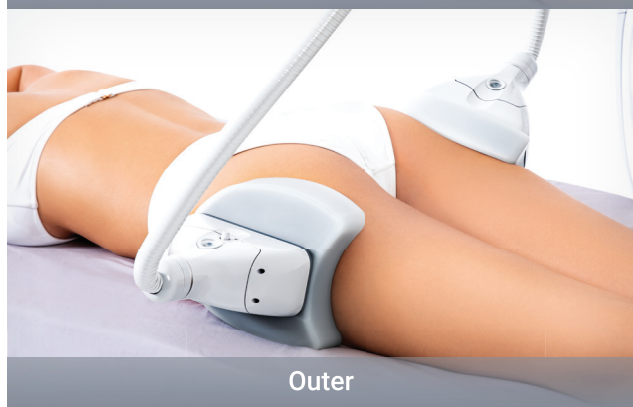
ARC-T



Front



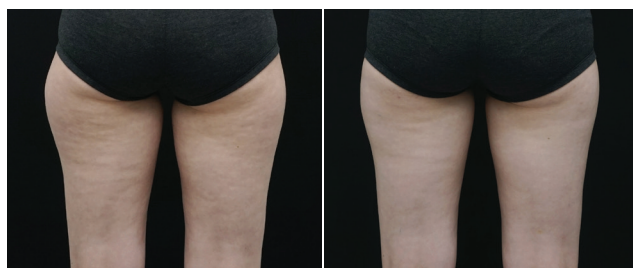
Back



Outer



Inner



Baseline

Post 6 Weeks / 1 Session



Baseline

Post 24 Weeks / 1 Session

Proven Results

Customized Solutions for the Most Challenging of Patients' Needs.



WING

for Large Fat Pockets



Baseline

Post 4 Weeks / 1 Session



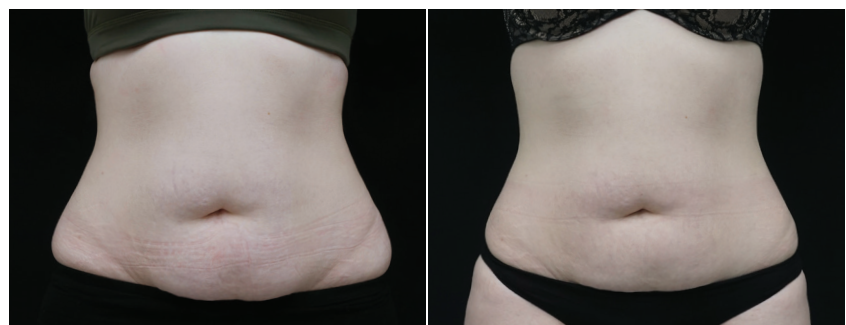
Baseline

Post 14 Weeks / 1 Session



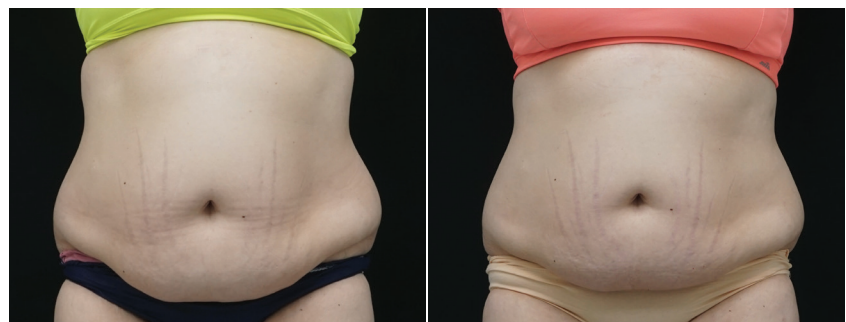
WING Max

for Large Fat Pockets



Baseline

Post 13 Weeks / 1 Session



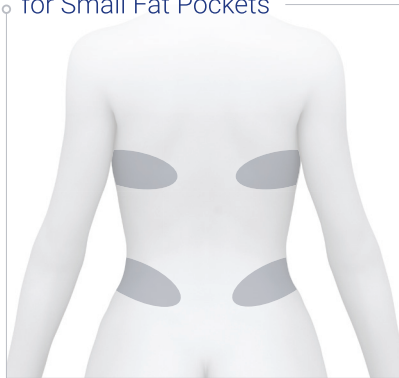
Baseline

Post 9 Weeks / 1 Session



WING Plus

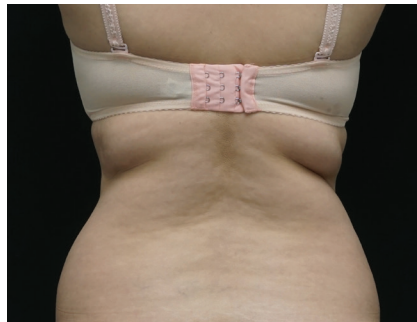
for Small Fat Pockets



Baseline



Post 6 Weeks / 1 Session



Baseline

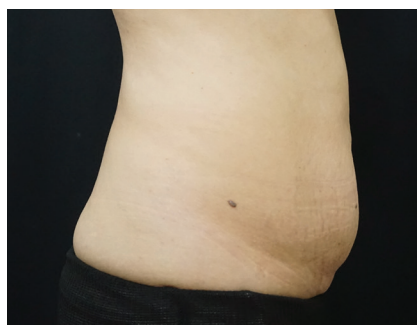


Post 9 Weeks / 1 Session

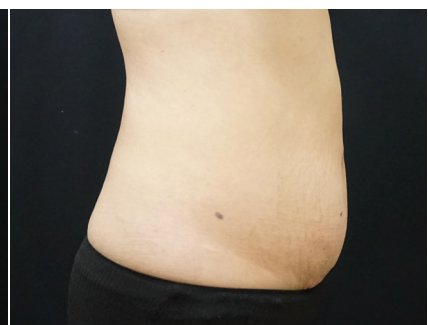


FLAT

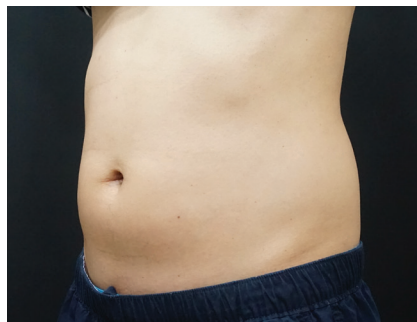
for Small Fat Pockets



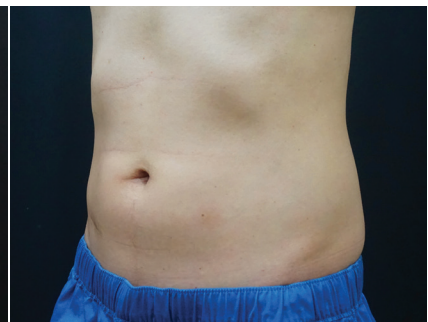
Baseline



Post 8 Weeks / 1 Session



Baseline



Post 8 Weeks / 1 Session



EXPORT ONLY

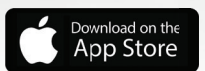
No Side Effects
Non-Invasive
Effective & Safe
Economical Treatment Costs

WHAT IS YOUR NEXT ALPHA?



T +82-2-517-2114 | classys.com | info@classys.com
Images and texts are intellectual property of classys. Copying of this material can be subject to charges of both civil and criminal law of legal justice.
Copyright to Classsys © all rights reserved. Export only.

Download the Official App



Get social with us!



[classysHQ](https://www.facebook.com/classysHQ)

CPB04EN2019



09-7760300 | ami.co.il | amiweb@ami.co.il | [in](#) [@](#) [f](#) | חפשו אותנו ב: [in](#) [@](#) [f](#) | משוק בלעדית ע"י אמי טכנולוגיות